

# **USER MANUAL**

## **SC530**



# ***Regulatory Compliance***

## ***Information***

### **FCC Declaration of Conformity**

This device complies with Part 15 of the FCC Rules. Operation is subject to the following two conditions: (1) this device may not cause harmful interference, and (2) this device must accept any interference received, including interference that may cause undesired operation.

This equipment has been tested and found to comply with the limits for a Class B digital device, pursuant to part 15 of the FCC Rules. These limits are designed to provide reasonable protection against harmful interference in a residential installation. This equipment generates, uses and can radiate radio frequency energy and, if not installed and used in accordance with the instructions, may cause harmful interference to radio communications. However, there is no guarantee that interference will not occur in a particular installation. If this equipment does cause harmful interference to radio or television reception, which can be determined by turning the equipment off and on, the user is encouraged to try to correct the interference by one or more of the following measures:

- Reorient or relocate the receiving antenna.
- Increase the separation between the equipment and receiver.
- Connect the equipment into an outlet on a circuit different from that to which the receiver is connected.
- Consult the dealer or an experienced radio/TV technician for help.

For questions related to the EMC performance of this product, contact:

Elitegroup Computer Systems Co., Ltd  
No.239, Sec. 2, Ti Ding Blvd., Taipei, Taiwan 11493  
886-2162-1177

## Canadian Department of Communications Compliance Statement

This digital apparatus does not exceed the Class B limits for radio noise emissions from digital apparatus set out in the Radio Interference Regulations of the Canadian Department of Communications. This device complies with Industry Canada licence-exempt RSS standard(s). Operation is subject to the following two conditions: (1) this device may not cause interference, and (2) this device must accept any interference, including interference that may cause undesired operation of the device.

Le présent appareil numérique n'émet pas de bruits radio électriques dépassant les limites applicables aux appareils numériques de la classe B prescrites dans le Règlement sur le brouillage radioélectrique édicté par le ministère des Communications du Canada. Le présent appareil est conforme aux CNR d'Industrie Canada applicables aux appareils radio exempts de licence. L'exploitation est autorisée aux deux conditions suivantes : (1) l'appareil ne doit pas produire de brouillage, et (2) l'utilisateur de l'appareil doit accepter tout brouillage radioélectrique subi, même si le brouillage est susceptible d'en compromettre le fonctionnement.

**CE** **CE mark.** Declaring compliance to all the applicable European Union (EU) directives. For CE mark related questions:

Elitegroup Computer Systems Co., Ltd

No.239, Sec. 2, Ti Ding Blvd., Taipei, Taiwan 11493

886-2162-1177

## French SAR/DAS

Votre ordinateur a un DAS. Pour plus d'informations, voir le portail radiofréquences-sante-environnement:  
[www.radiofréquences.gouv.fr](http://www.radiofréquences.gouv.fr)



In the European Union, this symbol indicates that this product including battery must not be disposed of with household waste. It is your responsibility to hand it over to a designated collection point for the recycling of waste electrical and electronic equipment. For more information, please contact your local waste collection center or the point of

purchase of this product.

**Taiwan battery recycling:**

Translation – please recycle batteries



廢電池請回收

## ***Safety Precautions***

The following are lists of precautionary measures the students must understand before using this computer inside the classroom or home environment:



1. Do not place near the fire or other sources of heat.
2. Do not expose to magnetic fields.
3. Do not expose to direct sunlight.
4. Do not expose to rain or moisture.
5. Do not place heavy objects to add heavy pressure on the computer.
6. Do not drop the computer.

### ***CAUTION***

RISK OF EXPLOSION IF BATTERY IS REPLACED BY AN INCORRECT TYPE. DISPOSE OF USED BATTERIES ACCORDING TO THE INSTRUCTIONS.

### ***ATTENTION***

RISQUE D'EXPLOSION SI LA BATTERIE EST REMPLACÉE PAR UN TYPE INCORRECT. RECYCLEZ LES BATTERIES USAGÉES SELON LES INSTRUCTIONS.



TO PREVENT POSSIBLE HEARING DAMAGE, DO NOT LISTEN AT HIGH VOLUME LEVELS FOR LONG PERIODS.

IT IS RECOMMENDED TO USE THIS COMPUTER IN AN ENVIRONMENT WHERE THE AMBIENT TEMPERATURE IS NO MORE THAN 35°C.

DO NOT USE THE NOTEBOOK ON LAP AS THIS MAY BLOCK VENTS/FAN OUTLETS AND CAUSE OVERHEATING, AND THE HEAT GENERATED MAY RESULT IN DISCOMFORT.

# **Contents**

<b>1. Getting to know your computer.....</b>	<b>1</b>
Package contents.....	1
Views.....	2
Front .....	2
Left.....	3
Right .....	4
Top and Back .....	4
Function keys .....	5
<b>2. Using your Laptop.....</b>	<b>6</b>
Powering ON/OFF .....	6
Powering on your computer .....	6
Powering on for the first time.....	6
Powering off your computer .....	7
Putting your computer into sleep mode.....	8
Waking up your computer .....	8
Basic touchpad operations.....	9
<b>3. Windows 11 Interface.....</b>	<b>10</b>
Desktop and virtual desktop experience .....	10
Taskbar .....	11
Start menu.....	11
App shortcuts area.....	12
Notification area .....	12
<b>4. Setup and Connection .....</b>	<b>13</b>
Settings screen.....	13
Windows Activation .....	14
Setup Your Microsoft Account.....	14
Pin and unpin your app .....	15
Pinning an App to Start menu or taskbar .....	15


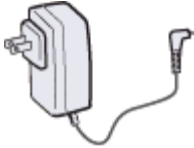

Removing an App .....	16
Wireless LAN .....	17
Enabling wireless connection.....	17
Connecting to a wireless LAN.....	17
Micro SD Card Slot.....	18
To insert your micro SD card .....	18
To remove your memory card .....	19
Connecting an External Device .....	19
Connecting to the USB port .....	19
Connecting to the DisplayPort or HDMI port.....	20
Fingerprint login (optional).....	21
<b>5. Battery .....</b>	<b>23</b>
Charging your battery.....	23
Inspecting your battery status.....	24
Taskbar.....	24
By inspecting the battery indicator .....	25
<b>6. Windows Help and Troubleshooting .....</b>	<b>26</b>
Troubleshooting.....	26
<b>7. Specification .....</b>	<b>30</b>



# 1. Getting to know your computer

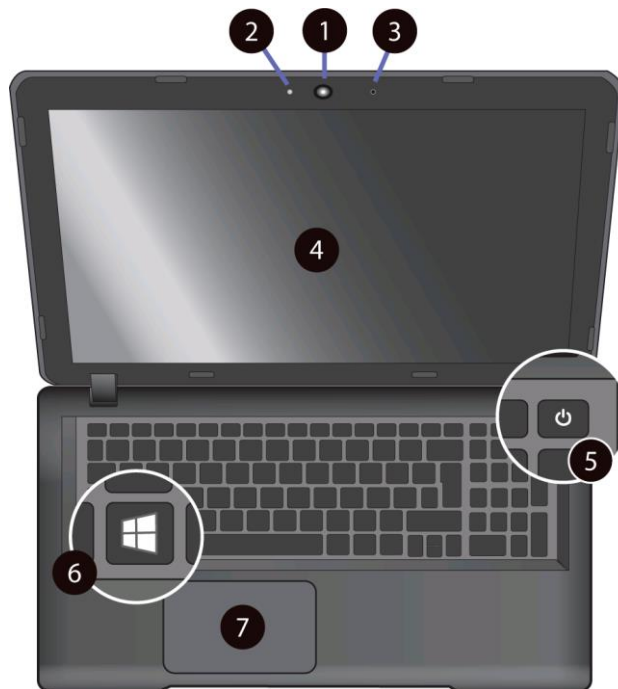
## Package contents

Carefully unpack your box and take out the items listed as below. If any of the items is missing or damaged, contact your dealer immediately:

<ul style="list-style-type: none"><li>• One laptop</li></ul> 	<ul style="list-style-type: none"><li>• One DC-in adapter</li></ul> 
<ul style="list-style-type: none"><li>• This manual</li></ul> 	

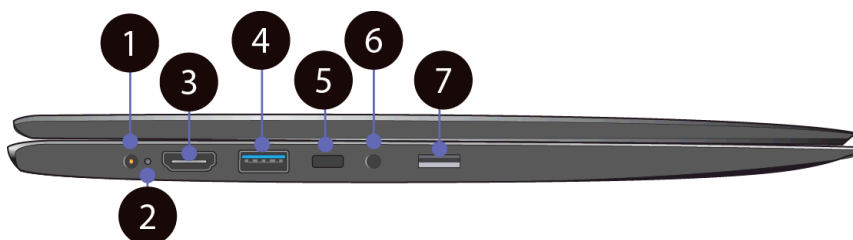
## Views

### Front



No.	Name	Function
1	Webcam	Often for taking self-portraits as well as for video conferencing.
2	Webcam LED indicator	It lights on when the webcam is in use.
3	Microphone	Often for collection your voice for voice recognition.
4	LCD screen	The main display of your laptop
5	Power button	Power on/off your laptop.
6	Windows key	Press this key to open the start menu
7	Touchpad	Allows you to control your system using figure gestures.

## Left



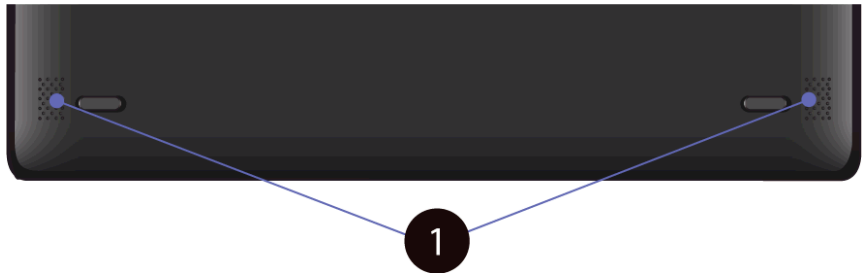
No.	Name	Function
1	DC-in	Plug the adapter to charge the battery.
2	Charging indicator	Shows the battery charging status.
3	HDMI port	Plug your HDMI-cable here
4	USB 3.0 port	Plug your USB devices here.
5	USB Type-C port	.This is the latest USB standard port, and its bandwidth is double of that of a USB 3.0 port.
6	Audio jack	This is an external 3.5mm headphone-out + microphone-in jack, and you can connect your external headphone set here.
7	SD card slot	Plug your micro SD card here.

**Right**



No.	Name	Function
1	USB 2.0 port	Plug your USB devices here.
2	RJ-45 port	Plug your RJ-45 cable into here to connect your laptop to a wired network.
3	Kensington lock slot	Lock your laptop to your desk or any stationary object using a Kensington lock.

**Top and Back**



No.	Name	Function
1	Speaker	The sound system has two speakers for playing music, notification sounds, and other audio data.

## Function keys



Fn

+

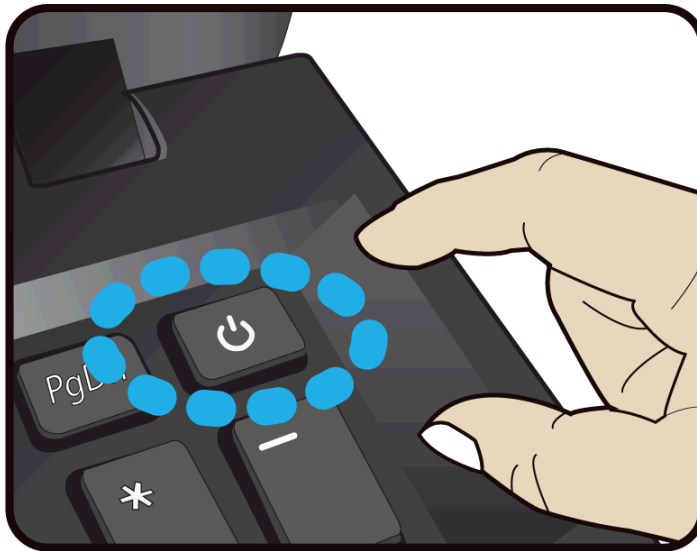
F2	Puts your computer into sleep mode.	F7	Decreases the volume level.
F3	Decreases the display brightness.	F8	Increases the volume level
F4	Increases the display brightness.	F9	Disables or enables the touchpad.
F5	Switches display output between your display, external monitor (if connected) and both.		Press this to play or pause the media file
F6	Mutes/unmutes the audio output.	Del Ins	Press to switch between overtype mode and insert mode.

Note: If your software uses some of the function keys to perform dedicated functions, you can perform the function by pressing "Fn" plus the desired function key.

## 2. Using your Laptop

### Powering ON/OFF

#### Powering on your computer



1. If this is the first time you turn this computer on, connect the AC adapter and fully charge the battery.
2. Press the power button (normally 1 to 2 seconds.). You shall see the power indicator blinking and the screen will light up within 5 seconds.

#### Powering on for the first time

The laptop will require you to do the initial setup, which including:

- Activate your Windows 11
- Sign in to or create your Microsoft account
- Setup a wireless connection and more

Please follow the instruction to complete the initial setup.

## Powering off your computer

Save all your data before powering your computer off.

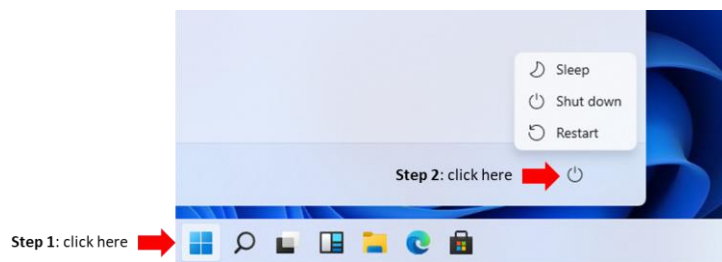
To power off your system, following the steps below:

### A. By Start menu

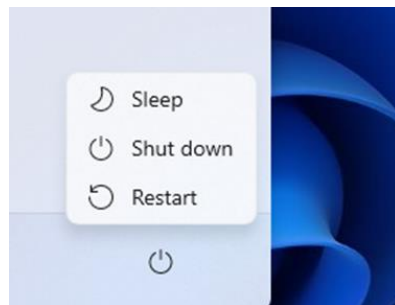
1. Click the Windows icon in the low-left corner of the Desktop. Or, press on the Windows key in the keyboard.



2. In the Start menu, click <Power> option, as shown on the right,



3. Select <Shut down> from the power option menu, as shown on the right.



## B. Using the power button

For some reasons if your laptop cannot be powered off by the previous way, you can try to press and hold the power button for at least four seconds. This shall force the laptop to power off itself directly.

## Putting your computer into sleep mode

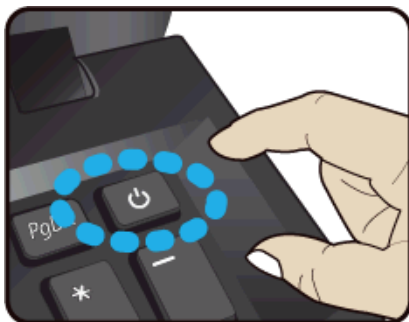
When you will be away from your computer for a short time, put the computer to sleep.

Do one of the following:

- Close the display panel
- Press Fn + F2.
- Press the power button briefly one time.
- Open the Start menu and then select <Power> → <Sleep>.

## Waking up your computer

Note: It is recommended that you put your computer to sleep before you move it. Moving your computer while the hard disk is spinning can sometimes damage the hard disk, causing loss of data.

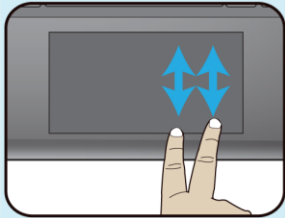
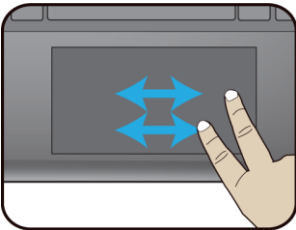


When your laptop is in the sleep mode, just press the power button briefly one time (about one second) to wake the laptop up.



## Basic touchpad operations

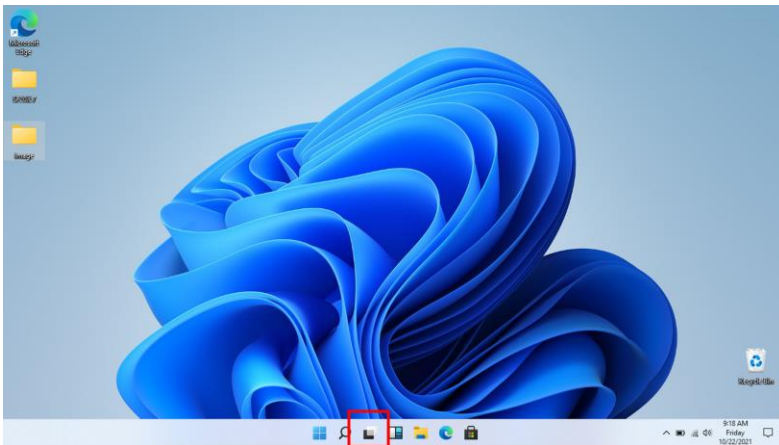
The touchpad works like a traditional mouse. With it, you can move the cursor and perform left-click, right-click, double-click actions. However, the actual available actions are application dependent.

Action name	Explanation
Left-clicking (or Clicking)	Tap once on the touchpad surface or press once on the low-left corner of the touchpad.
Right-clicking	Press once on the low-right corner of the touchpad.
Dragging	Press and continue to hold down the left corner and then move (drag) your finger across the touchpad surface.
Vertical scrolling 	Drag two fingers vertically on the touchpad.
Horizontal scrolling 	Drag two fingers horizontally on the touchpad.

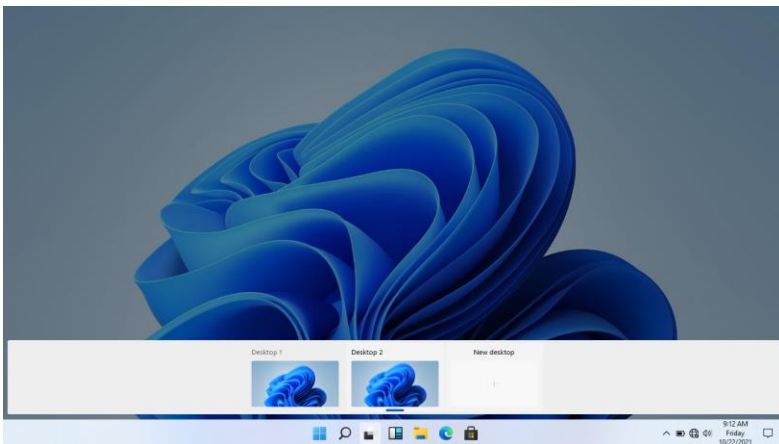
# 3. Windows 11 Interface

## Desktop and virtual desktop experience

The Desktop screen is as shown below and natively provides virtual desktop feature.



To launch the feature you can click the virtual desktops button on your taskbar or just press Window key and TAB key of your keyboard in the same time.



## Taskbar

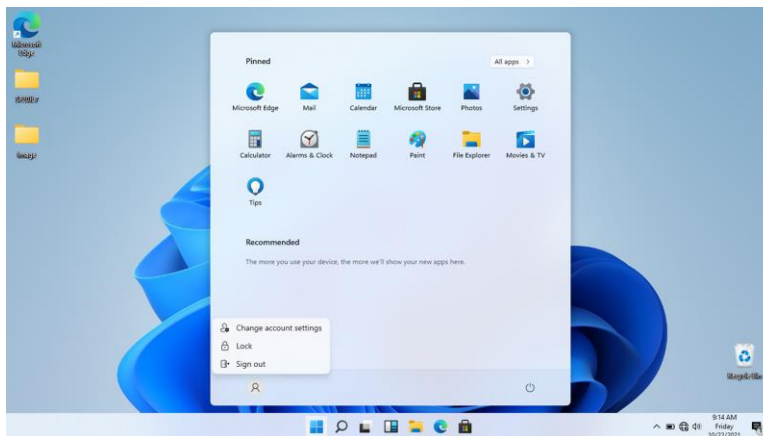
The light blue bar on the bottom of the desktop is called Taskbar. It provides several key features and they are:

- Start menu
- Search box
- App shortcuts area
- Notification area

### Start menu



To open the Start menu, you can either click on the windows icon (which is also known as Start button) located at the central end of the taskbar or press once on the windows key of the keyboard. And the Start menu will appear, as shown below



For how to setup this menu, please refer to page 16.

## App shortcuts area







In the taskbar area, you can put the shortcuts of your frequently used apps. For how to arrange this area, please refer to page 16

## Notification area

The right part of the taskbar holds several icons that show you the status of your system, as shown below.



This is an area called Notification Area, where

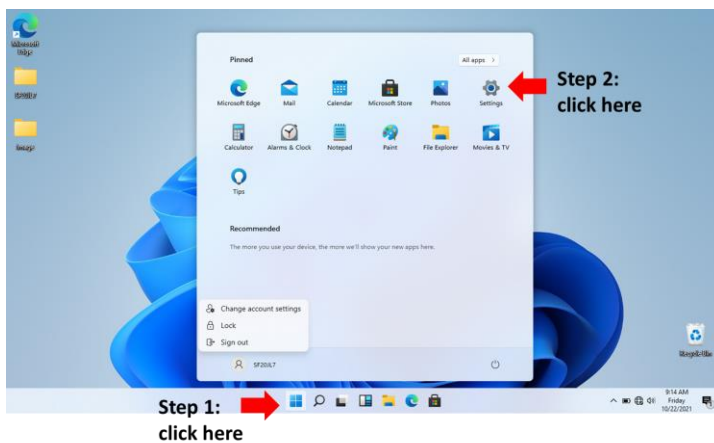
	Click here to show more hidden status icons.
	Shows you the current battery status.(For detail, please refer to page 25)
	Shows you the status of your wireless network connection.
	Click here to show the system notifications and several shortcuts.

# 4. Setup and Connection

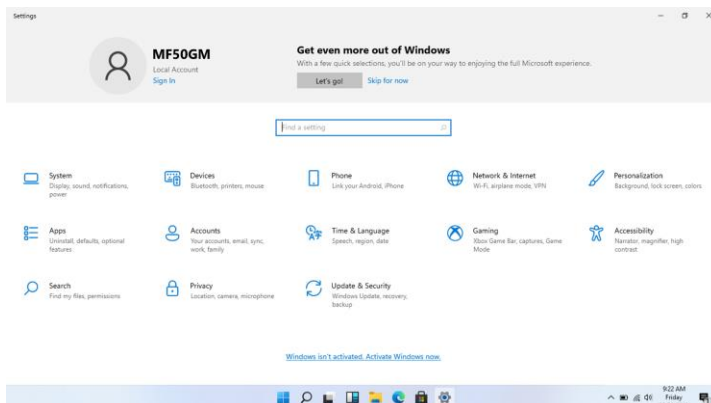
## Settings screen

To access to the Settings screen:

1. Click the Windows icon at the bottom of the Desktop screen. Or, press on the Windows key in the keyboard.
2. Click the Settings icon.



This will open the Settings screen, as shown below



Next, the following sections will guide you through the basic setup of your windows system.

## Windows Activation



**Update & Security**  
Windows Update, recovery,  
backup

To use all features of your Windows pc, you may need to activate your Windows system. Follow the following steps to

register and activate your Windows.

1. Open the Start menu and click <Settings >.
2. Click <Update & security>
3. Select <Activate>.
4. Follow the instructions to activate your windows.

## Setup Your Microsoft Account



**Accounts**  
Your accounts, email, sync,  
work, family

To share files or settings with other devices running Windows 11, you need to setup a Microsoft Account.

Furthermore, if you want to download or purchase apps from the Microsoft Store, such Microsoft Account is required.

To setup your Microsoft account

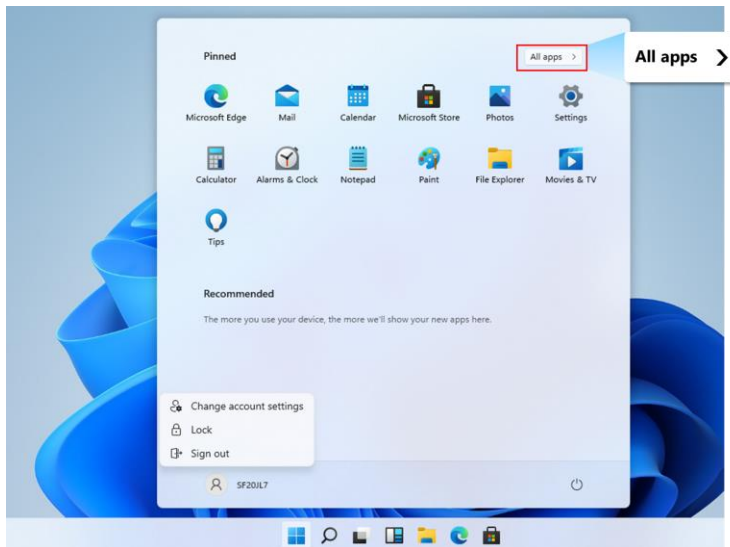
1. Open the Settings screen and select <Accounts>.
2. Select <Your account >
3. Select <Sign in with a Microsoft account instead>.
4. Follow the instruction to register your account information.

# Pin and unpin your app

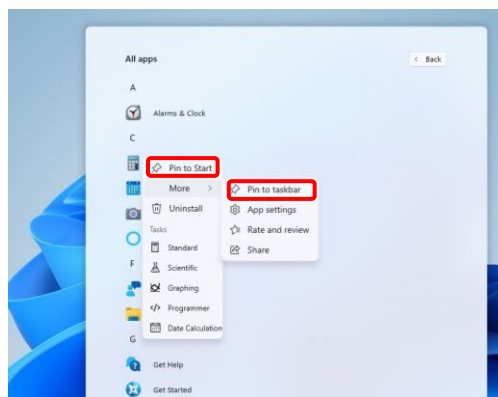
## Pinning an App to Start menu or taskbar

To add an app:

1. Open the Start menu and select <All Apps>.



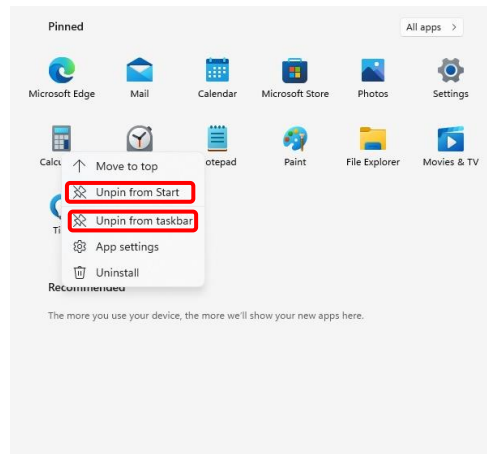
2. Right-click on the app that you want to appear on your Start menu or taskbar, and an option menu appears.
3. Click <Pin to taskbar> or <Pin to Start> to add the app to your Start menu or taskbar.



## Removing an App

To remove an app:

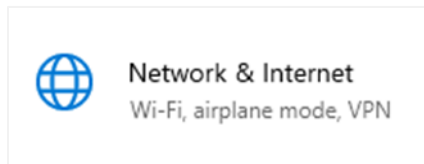
1. Right click the app that you want to remove from your Start menu or taskbar.
2. Click <Unpin from Start> or <Unpin from taskbar> to remove it from your Start menu or taskbar.





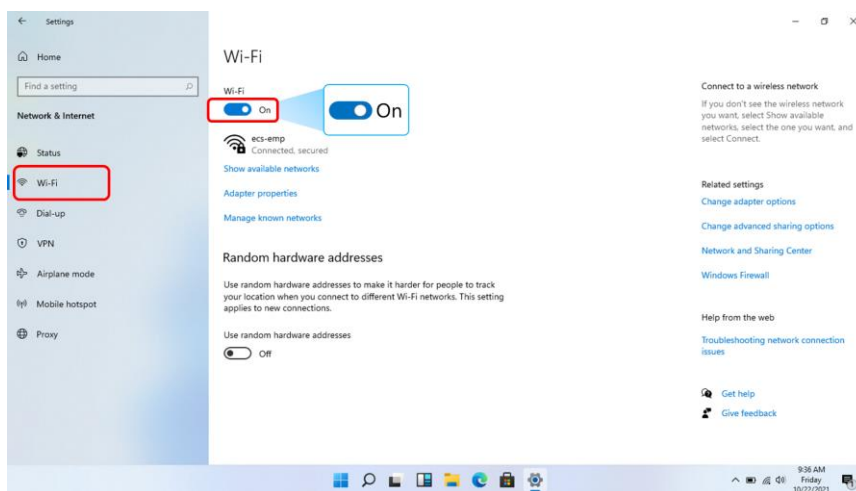
## Wireless LAN

### Enabling wireless connection



1. Open Settings menu and select <Network & Internet>.

2. Select <Wi-Fi> and set the function to ON, as shown below



3. Make sure you have switched the Airplane mode off. To confirm that Airplane mode is disabled, go to the desktop and check the notification area. If you see an airplane icon displayed on the lower right, please disable the Airplane mode first.

### Connecting to a wireless LAN

Once the wireless has been enabled, the computer automatically scans for available wireless networks and displays them in the wireless LAN network list. To connect to your desired wireless network, click the network's name in the list, and then click Connect.

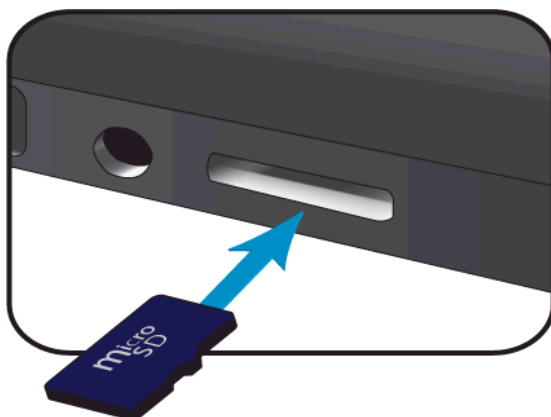
**Note:** Some networks require a network security key or password for connection. If necessary, ask the network administrator or the Internet service provider (ISP) for the required information.

## Micro SD Card Slot

You can utilize your micro SD cards as removable disks and conveniently exchange data with digital devices such as a digital camera, digital camcorder, MP3, etc.

### To insert your micro SD card

1. Insert the micro SD card into the card slot as shown below.



2. Follow the message on the screen, and choose to open and view files.
3. A Windows Explorer runs and shows all the folders and files in the micro SD cards, and you can save, move and delete data as you are handling a storage device.

## To remove your memory card

1. Press the card and release. The card will pop up.
2. Pull the card out by holding the end of the card.

## **Connecting an External Device**

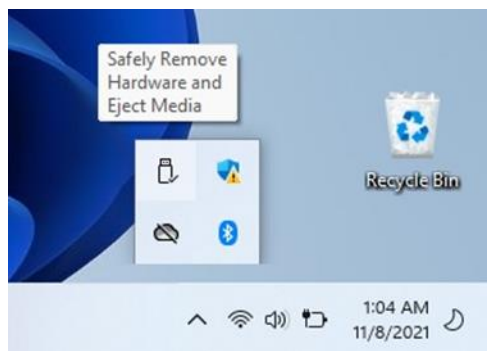
### Connecting to the USB port

Your computer comes with three USB ports. Once you plug a USB device into any of them, Windows automatically loads a driver for that device. After the driver has been loaded one time, you can disconnect and reconnect the same device without performing any additional steps.

Note: If Windows requires you to install the driver before connecting, check the documentation provided by the device's manufacturer before connecting the device.

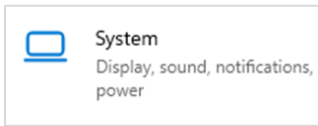


To disconnect a USB storage device, make sure you click the Safely Remove Hardware icon (as shown on the right) in the notification area of the taskbar to remove the device before disconnecting.



Note: If your USB device uses a power cord, connect the device to a power source before connecting it.

## Connecting to the DisplayPort or HDMI port



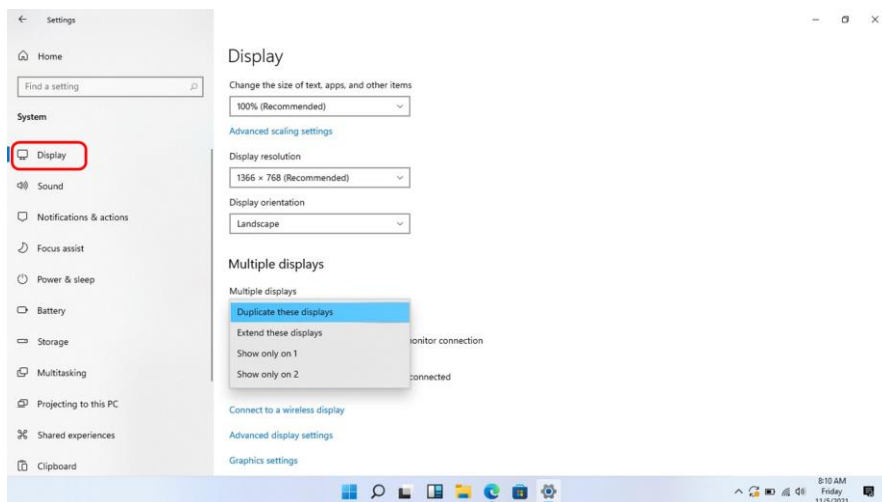
You can connect your external display device such as a monitor, TV, or projector to your laptop, if such device has a HDMI

port. By doing so, you have a wider view when you give a presentation or watch a video or movie.

1. Power off the external device.
2. Locate the HDMI port on your laptop.
3. Connect one end of your cable to the port, and the other end to the port on the external device.
4. Power on the external device.

When connecting a TV, you may need to configure your TV to external device mode.

5. Open the Settings screen, select <System> and then <Display>.
6. Click <Multiple displays> to open the drop-down list.



7. From the list, select your desired monitor mode.
8. Click <Apply> and confirm your setting.

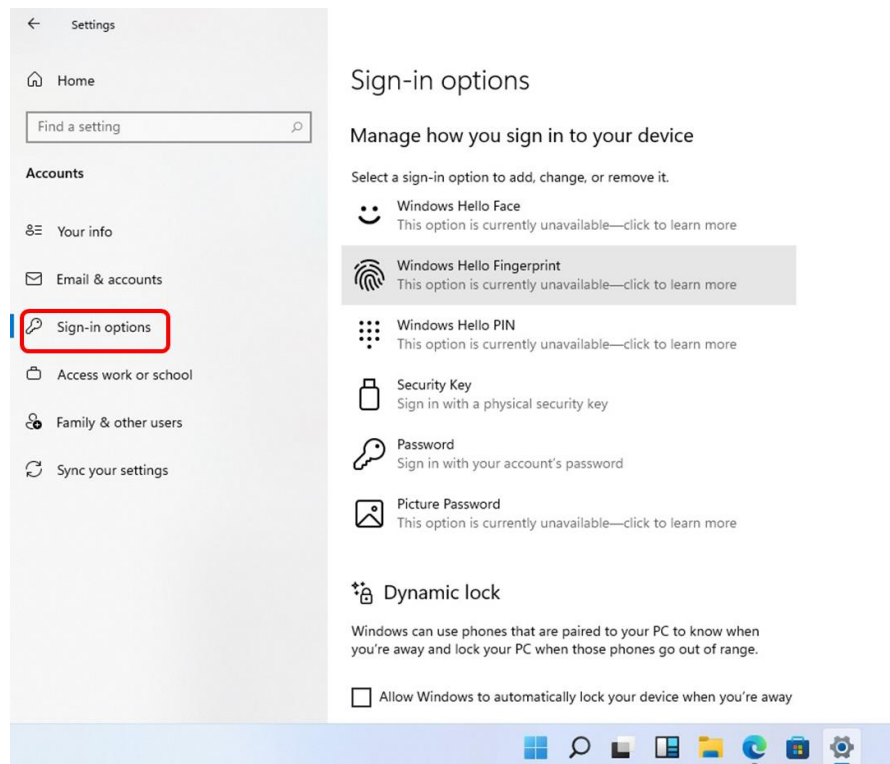
## Fingerprint login (optional)

If your system comes with the fingerprint login feature, you can follow the following steps to activate this feature:

1. Open the Settings page and select Accounts.

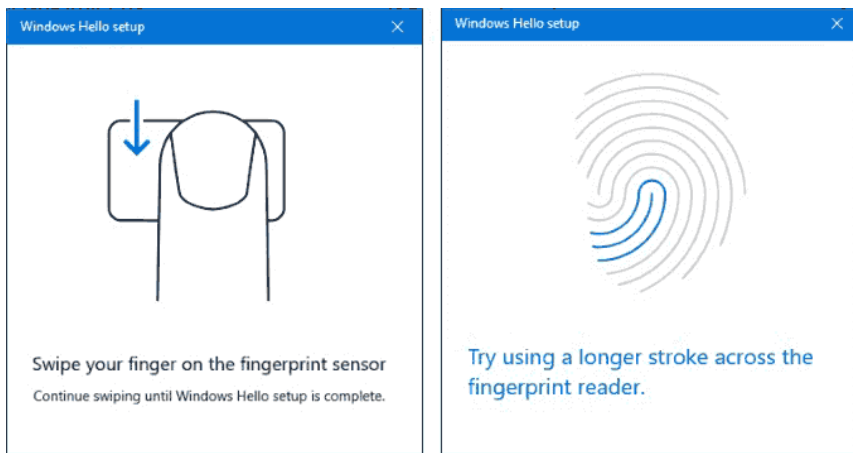
For how to open the Settings page, please refer to page 14.

2. In the Accounts page, select “Sign-in options”.



**Note:** Before setting your fingerprint sign-in option, you need to set your password first if you have not set one yet.

3. In the Fingerprint field, click “Setup”. This will activate a feature called Windows Hello.
4. Click “Get started” here, and the system will ask you to swipe your finger with the popup box as shown below. The system will request you to repeat this process for several times.



After you follow the instructions shown on the screen, you are able to login to your laptop with your fingerprint.

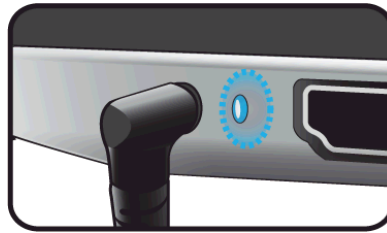
# 5. Battery

## Charging your battery



1. Plug the adapter into the DC-in, which you can find on the right side of your laptop.

2. You shall see the battery indicator blinking in blue.



3. When the battery is fully charged, the indicator will light in solid blue.

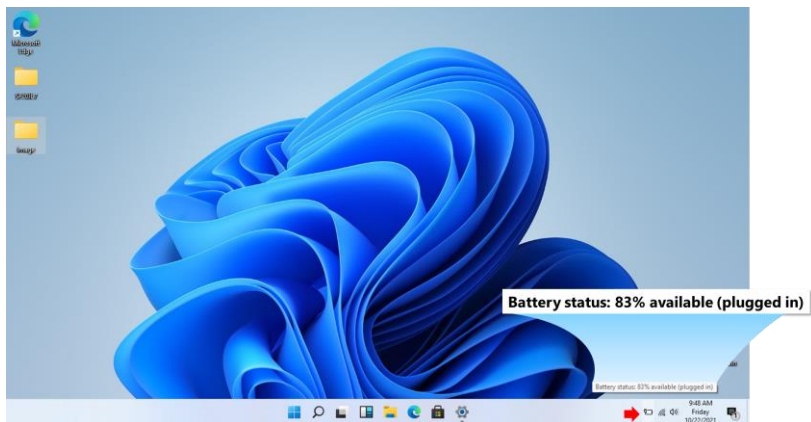
While system is off, it takes around 2.5 ~ 3 hours to fully charge the battery. After fully charged, the battery Life reaches 10 hours

**Note:** If the remaining power in your battery capacity is 90% or above, plugging the adapter will not fully charge your battery.


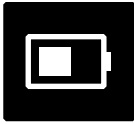


## Inspecting your battery status

### Taskbar

In Desktop, move the cursor to the battery icon in the taskbar. A pop-up dialog box appears and shows you the remaining battery percentage, as shown below.



The battery icon reveals the status of your battery, which described as below.

	Battery is fully charged
	Battery is starting to drain
	Battery is about to completely drain, and you should stop using your computer and charge it at once.
	Battery is being charged.



## **By inspecting the battery indicator**

The power/battery indicator can show you the approximate status of your battery.

- Battery Low : Rapidly blinking in red
- Battery being charged: Blinking in blue.

A battery is an expendable supply, so when using it over a long time, the capacity/battery life is shortened. If the battery life is reduced to under half of its initial time, we recommend purchasing a new battery.

When not using the battery for a long time, store the battery after charging it to 30-40% of its capacity. This extends the battery life time.

# 6. Windows Help and Troubleshooting

## Troubleshooting

This section describes some common problems and suggested solutions, and ways to recover your computer from a crash.

Be aware that the problems and solutions described here are meant only as a guide. They are not definitive problem solving techniques. For certain problems, you might need help from your reseller or your service provider.

When you observe a problem, stop operation immediately, because taking further action might result in data loss or damage. Take a note of what the system is doing and what actions you performed before the problem occurred. Provide detailed information to your service provider for quicker problem resolution.

For about any problem, follow these steps:

1. Restart your laptop.
2. Check your Wi-Fi connection.
3. Reset your Wi-Fi connection.
4. Plug your laptop to a wall socket to charge it for at least one hour.

Screen problems	
When I turn on the computer, nothing appears on the screen.	<ul style="list-style-type: none"> <li>• If the screen is blank, make sure that:               <ul style="list-style-type: none"> <li>- The AC adapter is connected to the computer and the power cord is plugged into a working electrical outlet.</li> <li>- The computer power is on. (Press and hold the power button 4 seconds to force the power off, and power it on again.)</li> </ul> </li> <li>• If these items are properly set, and the screen remains blank, have the computer serviced.</li> </ul>
My screen goes blank while the computer is on.	<ul style="list-style-type: none"> <li>• Your laptop is in its sleep mode. Do one of the following to resume from sleep mode:               <ul style="list-style-type: none"> <li>- Press any key on the keyboard for 2 to 3 seconds.</li> <li>- Press the power button.</li> <li>- Press the windows key button.</li> </ul> </li> </ul>
Sleep problems	
The critical low-battery error message appears, and the computer turns off	<ul style="list-style-type: none"> <li>• The battery power is getting low. Connect the AC adapter to the computer.</li> </ul>
The computer enters sleep mode immediately after Power-on.	<ul style="list-style-type: none"> <li>• Make sure that the battery is charged.</li> <li>- The operating temperature may be too hot. Move to a cooler environment and try to wake the computer.</li> </ul>

The computer does not return from sleep mode and the computer does not work.	<ul style="list-style-type: none"> <li>• If your computer is in sleep mode, connect the AC adapter to the computer, then press the key button or the power button.</li> <li>• If your computer is powered-off, connect the AC adapter to the computer, then press the power button to resume operation.</li> </ul>
Display problem	
The screen is blank.	<ul style="list-style-type: none"> <li>• Do the following: <ul style="list-style-type: none"> <li>- If you are using the AC adapter, or using the battery, and the battery status indicator is on, press Fn+F4 to make the screen brighter.</li> <li>- Press the power button to resume from sleep mode.</li> <li>- If the problem persists, follow the solution in the next problem "The screen is unreadable or distorted."</li> </ul> </li> </ul>
The screen is unreadable or distorted.	<ul style="list-style-type: none"> <li>• Make sure that: <ul style="list-style-type: none"> <li>- The screen resolution and color quality are correctly set.</li> <li>- The monitor type is correct.</li> </ul> </li> </ul>
Incorrect characters appear on the screen.	<ul style="list-style-type: none"> <li>• Are the operating system or programs installed correctly? If they are installed and configured correctly, have the computer serviced.</li> </ul>
Sound problems	
No sound can be heard	<ul style="list-style-type: none"> <li>• Make sure that:</li> </ul>

from the speaker even when the volume is turned up.	<ul style="list-style-type: none"> <li>- The Mute function is off.</li> <li>- The combo audio jack is not being used.</li> <li>- Speakers are selected as the playback device.</li> </ul>
Other problems	
Your computer does not respond.	<ul style="list-style-type: none"> <li>• To turn off your computer, press and hold the power button for 4 seconds or more. If the computer still does not respond, remove the AC adapter.</li> <li>• Your computer might lock when it enters sleep mode during a communication operation. Disable the sleep timer when you are working on the network.</li> </ul>
The connected external device does not work.	<ul style="list-style-type: none"> <li>• Do not connect or disconnect any external device cables other than USB while the computer power is on. Otherwise, you might damage your computer.</li> <li>• When using a high power consumption external device such as an external USB optical disk drive, use an external device power adapter. Otherwise, the device may not be recognized.</li> </ul>

## 7. Specification

<b>Processor</b>	<ul style="list-style-type: none"> <li>■ Intel® SOC Celeron® Processor: N4000/N4100, Base Freq:1.1GHz / Intel® UHD Graphics600</li> <li>■ Intel® SOC Pentium® Processor:N5000 Base Freq:1.1GHz / Intel® UHD Graphics605</li> </ul>
<b>Memory</b>	<ul style="list-style-type: none"> <li>■ DDR4 speed up to 2400MHz</li> <li>■ RAM socket *1</li> <li>■ Support 4GB/8GB</li> </ul>
<b>Storage</b>	<ul style="list-style-type: none"> <li>■ EMMC <ul style="list-style-type: none"> <li>● Support 64G/128G EMMC v5.0</li> </ul> </li> <li>■ HDD (Optional) <ul style="list-style-type: none"> <li>● Support SATA 3.0</li> <li>● 5400rpm, 500G</li> </ul> </li> <li>■ SSD <ul style="list-style-type: none"> <li>● Support 128GB</li> </ul> </li> </ul>
<b>Dimension</b>	<ul style="list-style-type: none"> <li>■ 368mm x 244mm x 19.9mm</li> </ul>
<b>Weight</b>	<ul style="list-style-type: none"> <li>■ 1.56kg with SSD; or 1.66kg with HDD</li> </ul>

<b>Wireless</b>	<ul style="list-style-type: none"> <li>■ 1x1ac Combo (AC3168) <ul style="list-style-type: none"> <li>● 802.11ac 1x1 (5GHz/2.4GHz dual band support)</li> <li>● Bluetooth4.2 LE</li> <li>● M.2 2230 supported</li> </ul> </li> <li>■ Optional 2x2ac Combo (AC9560) <ul style="list-style-type: none"> <li>● 802.11ac, 2x2 Wave-2 compliant with MU-MIMO(5GHz/2.4GHz dual band support)</li> <li>● Bluetooth 5.0</li> <li>● M.2 2230 supported</li> </ul> </li> </ul>
<b>LCD</b>	<ul style="list-style-type: none"> <li>■ TFT Color LCD, LED Backlight</li> <li>■ 15.6" IPS / FHD 1920*1080, Anti-Glare</li> <li>■ Brightness 250 nits (typ.)</li> <li>■ eDP interface</li> </ul>
<b>Web CAM</b>	<ul style="list-style-type: none"> <li>■ 1M HD With DMIC *1</li> </ul>
<b>Battery</b>	<ul style="list-style-type: none"> <li>■ Polymer 2 cell 2S1P 5000mAh</li> <li>■ 37W, 7.4V</li> </ul>
<b>Input/Output</b>	<ul style="list-style-type: none"> <li>■ 1 x DC-in(3.5Ø)</li> <li>■ 1 x USB 3.0 port (Type A)</li> <li>■ 1 x USB Type C port (USB only)</li> <li>■ 1 x USB 2.0 port (Type A)</li> <li>■ 1 x HDMI</li> <li>■ 1 x Micro SD Card Reader</li> <li>■ 1 x combo Audio jack for microphone/headphone</li> <li>■ 1 x RJ45</li> <li>■ 1 x Kensington Lock</li> </ul>
<b>Speaker</b>	<p>Speaker :</p> <ul style="list-style-type: none"> <li>■ Speaker x 2 (1.5W, 8 Ω)</li> </ul>

Language	<ul style="list-style-type: none"> <li>■ English (US International)</li> <li>■ Spanish</li> <li>■ Portuguese</li> <li>■ Arabic</li> <li>■ Turkish</li> <li>■ Russian</li> <li>■ Simplified Chinese</li> <li>■ Thai</li> <li>■ Greek</li> <li>■ Hungarian French</li> <li>■ Traditional Chinese</li> <li>■ German</li> <li>■ Hebrew</li> <li>■ Italian</li> <li>■ Latin Spanish</li> <li>■ Brazil Portuguese</li> <li>■ French</li> <li>■ Belgium</li> <li>■ Swiss Germanic</li> </ul>	
AC adapter	<ul style="list-style-type: none"> <li>■ Automatics Voltage adjustment between 100 and 240VAC 50/60Hz 24Watts</li> <li>■ 12V/2A</li> </ul>	
Certification	EMC	<ul style="list-style-type: none"> <li>■ CE</li> </ul>
	RF	<ul style="list-style-type: none"> <li>■ RED / SAR / FCC (by request)</li> </ul>
	Safety& Environment	<ul style="list-style-type: none"> <li>■ CB / UL(by request)</li> <li>■ WEEE(Declaration)</li> <li>■ RoHS (Declaration) (Restriction of Hazardous Substances, EU directive 2011/65/EU)</li> <li>■ HDMI 1.4b</li> </ul>



	Validation	<ul style="list-style-type: none"> <li>■ Erp Lot 6</li> <li>■ Energy Star Computer v7.0</li> <li>■ HDCP</li> </ul>
--	------------	--







